

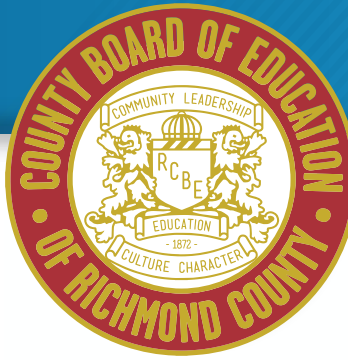
Richmond
County School System

2024-2025

School Choice Guide



MAGNET SCHOOLS AND SPECIALIZED PROGRAMS



Richmond County Board of Education

Charlie Walker, Jr., *President, District 7*

Shawnda Griffin, *Vice-President, District 1*

Charlie Hannah, *District 2*

Walter H. Eubanks, *District 3*

Wayne Frazier, Ed.D., *District 4*

Patsy Scott, *District 5*

Edward Lowery, *District 6*

Jimmy Atkins, *District 8*

Venus Cain, *District 9 (at-large)*

Helen Minchew, *District 10 (at-large)*

Dr. Kenneth Bradshaw

Superintendent of Schools

Superintendent's Cabinet

Horace Dunson

Deputy Superintendent of Operations and Administrative Services

Dr. Malinda Cobb

Associate Superintendent of Academic Services

Marcus Allen

Assistant Superintendent of Support Services

Nathan Benedict

Assistant Superintendent of Administrative Services for Cluster 1

Dr. Donald Mason

Assistant Superintendent of Administrative Services for Cluster 2

Dr. Shontier Barnes

Assistant Superintendent of Administrative Services for Cluster 3

Dr. Andrea Roberts

Assistant Superintendent for School Improvement and Administrative Services for Cluster 4

Dr. Cecil S. Clark, II

Chief Human Resources Officer

Bobby A. Smith, CPA

Chief Financial Officer

SUPERINTENDENT'S MESSAGE



RCSS Families,

Thank you for choosing the Richmond County School System to provide an educational foundation for your child. As your family makes decisions about schools for the next school year, we know you will consider a number of factors that align with what is best for your child's future as well as your family. Please consider us an invested partner in your child's education and development as we have highly skilled educators and principals as well as counselors and specialists to work with you and your family.

Our students have a wide range of academic interests and strengths. School choice gives you the opportunity to explore magnet schools, specialized programs and courses to meet your child's unique learning needs. As you review the **2024-2025 School Choice Options Guide**, please explore the videos located throughout the guide so you can gain a greater understanding of the experiences of current students and learn from program teachers as you consider schools for the upcoming academic year.

In addition to this guide, consider attending open house sessions hosted by the schools and programs to meet the faculty and students and to experience the opportunities available in our school system. Information about the open house sessions, choice programs and key dates is available on our website at rcboe.org/choice.

Our students and teachers are engaging with content, utilizing technology and developing social skills so they are successful in the classrooms and also in life. One of our goals as a school system is to develop lifelong learners that graduate college or career-ready. As you will see in the guide, school choice empowers our students to connect with a learning path that is a great fit for their futures.

Again, thank you for choosing the Richmond County School System and for partnering with us to meet the educational needs of your children.

Sincerely,

A handwritten signature in blue ink, reading "K. Bradshaw".

Kenneth Bradshaw, Ed.D
Superintendent of Schools
Richmond County School System

APPLICATION REQUIREMENTS

FOR EARLY CONDITIONAL ACCEPTANCE

System Requirements for all Magnet Schools and Specialized Programs:

- For a competitive application, students should have a final average of 80 in all core subjects (math, reading, science, social studies) from the previous school year.
- Applicants must participate in the system-wide reading and math assessment.
- Applicants must be residents of Richmond County to enroll in any Richmond County magnet school or specialized program.
- Kindergarten applicants must reach the age of 5 by September 1 of year enrolling.
- K-3 applicants must maintain a "B" average or a rating of 2 (for students with standards-based report cards), in language arts and math for the current school year; applicants in grades 4-11 must maintain an 80 average in core subjects. At the end of the current school year, magnet school candidates must present cumulative current report cards.

Students Currently Enrolled in the Richmond County School System:

- Before you begin the application, you will need your child's 9-digit student identification number. This number may be obtained from your child's current school, Parent Portal, or your child's report card. The number typically begins with the digits 300. This is NOT your child's social security number. Providing this number will allow us to access your child's grades and streamline the application process.



Students NOT Currently Enrolled in the Richmond County School System:

- Before you begin the application, you will need a copy of your child's report card for the last school year (unless you are applying to kindergarten). Students applying to 10th, 11th, or 12th grade will also be required to submit a current high school transcript.
- During the online application process, you will be prompted to upload supporting documents.
- If you are unable to upload required documents, please mail them to the address below. All items must be postmarked by **January 15:**

Richmond County School System
Attn: Magnet/Choice Application
864 Broad Street
Augusta, GA 30901





WHAT IS SCHOOL CHOICE?



The Richmond County School System families are offered a variety of school choice options designed to meet the interests and academic needs of all our students.

Students specialize in engineering, health sciences, and STEAM studies and gain hands on experience. From International Baccalaureate Programmes to skilled trades, cybersecurity, robotics, and visual and performing arts, we have options to support your child(ren)'s diverse interests.

In addition to specialized courses and programs, we provide opportunities to attend our award-winning magnet schools:

- [John S. Davidson Fine Arts Magnet School](#), a fine arts magnet school.
- [A. R. Johnson Health Science and Engineering Magnet School](#), a health science and engineering magnet school.
- [Richmond County Technical Career Magnet School](#), offering cybersecurity, culinary arts, networking, energy, audio/video technology and film, robotics, web design, game design and entrepreneurship.
- [C.T. Walker Traditional Magnet School](#), a magnet school with a focus on respect, patriotism, responsibility, and communication.

In addition to our magnet schools and specialized programs, we offer school choice options established by Georgia law to meet our family's needs. HB251 makes it possible to request a transfer to another school in Richmond County without the parent demonstrating a hardship. HB251 transfer applications are open November 1 through May 1 each year. Families residing in Richmond County may request a zone exemption from one school attendance zone to another for extreme hardships. The hardships include: medical, financial, and bullying, and proof of the hardship must be presented on the application. The school must have available space to be considered for the request.

The available criteria space is defined by any school that is above 90% of their enrollment capacity is not eligible for consideration for students who are out of zone. In addition, any newly opened school is not eligible for school choice for a period of four years.



TESTING AND TRANSPORTATION

2024 Magnet School and Specialized Program Testing Schedule

All students applying to magnet schools and specialized programs must participate in a reading and math readiness assessment. During the application process, parents will have the ability to select the preferred testing date and location. Students will take the test according to the grade for which they are applying.

Example: Students applying to kindergarten will test with kindergarten at C.T. Walker Magnet School.



Grade Level	January 24, 2024 at 4:30 p.m.	January 27, 2024 at 8:30 a.m.	January 27, 2024 at 11:00 a.m.	January 27, 2024 at 1:30 p.m.	May 17, 2024 at 8:30 a.m.
Kindergarten	Warren Road Elementary	C.T. Walker	C.T. Walker		C.T. Walker
1st-5th grade	Copeland Elementary Garrett Elementary	A. Dorothy Hains Elementary*		A. Dorothy Hains Elementary	A. Dorothy Hains Elementary
6th-12th grade	Academy of Richmond County Davidson Fine Arts Laney High**	Hephzibah Middle Langford Middle		Hephzibah Elementary A.R. Johnson RCTCM	Westside A.R. Johnson RCTCM

*1st-5th grade applicants with testing accommodation plans will test at Hains Elementary School - January 27, 2024 at 8:30 a.m.

**6th-12th grade applicants with testing accommodation plans will test at Laney High School - January 24, 2024 at 4:30 p.m.



Transportation

The following magnet schools and specialized programs offer transportation to and from school using a shuttle bus system:

- [Academy of Richmond County](#)
- [A.R. Johnson Health Science and Engineering Magnet School](#)
- [C.T. Walker Traditional Magnet School](#)
- [John S. Davidson Fine Arts Magnet School](#)
- [Lucy C. Laney Comprehensive High School](#)
- [Richmond County Technical Career Magnet School](#)

FREQUENTLY ASKED QUESTIONS

Can I apply for School Choice AND Magnet Schools?

Yes. Parents can apply to both and then select the desired school if accepted to both. Decisions for the **2024-2025** enrollment must be made in the spring.

Can I apply if I don't live in Richmond County, Georgia?

Yes, one may apply, but a student must be a resident of Richmond County at the time of registration in order to enroll. Students who are unable to provide proof of residency will forfeit their acceptance.

Can I make a correction to my application once it has been submitted?

Once your application has been submitted, you will not be able to make changes to your application. You must contact our school options office to make changes to your application.

Why do I have to provide my child's zoned school?

Once accepted into a magnet program, this information is used to alert the zoned school that the student will not be attending next year. This information helps us accurately staff our schools. A student's zoned school is not shared with the admissions team.

If my child is currently enrolled in a Richmond County School System school, can I find their student identification number in Parent Portal?

Yes. If you have an active account in Parent Portal, your child's student identification number appears in the top left information box under the name of the school. The number typically begins with the digits 300.

Can I submit a paper application instead of applying online?

All applications must be completed online. Assistance will be available every Monday through Friday, 8 a.m. - 5 p.m. during the months of November and December by calling Brian Hadden at **(706) 826-1136** or emailing him at haddebr@boe.richmond.k12.ga.us

Where/when will my child take the academic test?

During the application process, you will select a preferred testing date, time, and location. Your child will take the test at the location and will be considered for the program you selected, regardless of test location.

Can my child attend a magnet school and participate in sports and/or extracurricular activities at their zoned school?

Students who are enrolled in a magnet school may not participate in sports and/or extracurricular activities at their zoned school or any other school. Richmond County Board of Education policy states that to be eligible for participation in athletics, an individual must be enrolled full-time in the school that sponsors the competitive activity.

How can I prepare my child for the magnet grades 1-12 testing?

Students applying for grades 1-12 will take a computerized Reading and Math assessment that will generate a Lexile and Quantile score. Students considered for admissions must perform on-grade level or higher. For more information about both measures, please visit lexile.com or quantiles.com. To best prepare your students, review the Georgia reading and math educational standards for your child's grade level. Students should arrive 30 minutes prior to testing for check-in. Students applying to grades 1-12 should bring their own pencils and headphones for testing. Students will be allowed to use the restroom and stretch between the two tests.

What will my child need to bring to the academic test?

Students applying to grades 1-12 should bring pencils only. Students applying to kindergarten do not need to bring any materials.

Do I need to remain at the school while my student takes the placement test?

Parents will need to remain on campus in the waiting area. Since each student works at his or her own pace, testing times may vary between 45 minutes and 3 hours.

If my child is gifted, do they still need to participate in the testing?

Yes, all applicants must participate in testing.

Why do I have to indicate my child's gifted status?

This information is shared with the receiving school after the student has been accepted to ensure that gifted services are in place once the student arrives in the fall. This information is a voluntary portion of the application. Parents who do not wish to reveal this information on the application are not required. This information is not shared with the admissions team.

Can I change my mind about transportation?

Yes. If you change your mind, please let the school know during your March pre-registration meeting.

If my child is accepted, can they start now?

This application process is for the **2024-2025** school year.

Can my child be tested for kindergarten even if she is not yet old enough?

According to Georgia state law, students enrolling in kindergarten must reach the age of 5 by **September 1**.

DEDICATED MAGNET SCHOOLS



A.R. JOHNSON HEALTH SCIENCE & ENGINEERING MAGNET SCHOOL

A.R. Johnson is a public magnet school serving students in grades 6-12. Armed with academic excellence, students have opportunities to explore their interests and enhance their skills in science, technology, engineering and math related professions. Students specialize in engineering and health science studies and gain hands on experience to apply their classroom knowledge and earn hours toward certification in select programs of study.



[Zyani's Video](#)



[Maisie's Video](#)

C. T. WALKER TRADITIONAL MAGNET SCHOOL

C.T. Walker Magnet School serves students in grades K-5. The school has a long and proud tradition of academic excellence spanning more than thirty years. C.T. Walker has been named a Georgia School of Excellence, a National Magnet School of Distinction, and a National Blue Ribbon School. C.T. Walker strives to instill the qualities of respect, patriotism, responsibility, and communication.



JOHN S. DAVIDSON FINE ARTS MAGNET SCHOOL

John S. Davidson Fine Arts Magnet School was founded in 1981 as a pillar of excellence in academics and the study of fine arts. In addition to rigorous academic preparation, students develop and explore the art forms of drama, dance, visual art, music and creative writing. Students specialize in areas of the arts as they advance each year. This provides an enriching environment for the study of the arts, establishing Davidson as one the highest ranking schools in the state of Georgia and the nation.



[Amelio's Video](#)

RICHMOND COUNTY TECHNICAL CAREER MAGNET SCHOOL

RCTCM is a public magnet school serving students in grades 6-12. Students are admitted on selective criteria based upon prior school record, academic testing, and interest in Cybersecurity, Culinary Arts, Networking, Energy (Engineering), Audio/Video Technology & Film, robotics Web Design, Game Design and Entrepreneurship. **RCTCM** is adjacent to Augusta Technical College, where 40% of juniors and seniors participate in Dual Enrollment.



[Jonah's Video](#)



ACADEMY FOR ADVANCED PLACEMENT STUDIES

The Advanced Placement (AP) Studies are designed to expose highly capable students to challenging, rigorous, and accelerated curriculum. Successful candidates are challenged with opportunities in abstract thinking, problem-solving, and the use of higher-order thinking skills.

The Academy employs a schoolwide enrichment model and uses project based, hands-on instructional techniques. Students are highly engaged and are working at least one grade level ahead of other students in their age group and grade placement.

The Academy for Advanced Placement Studies enables students to pursue college level studies while still in high school by offering an impressive selection of AP courses. The Academy is designed for students who are interested in, and have a strong aptitude for, the humanities and sciences that are college bound.



[Kamron's Video](#)



AP SCHOOLS

- [Lucy C. Laney Comprehensive High School](#)
- [Westside High School](#)

WHO IS BEST SUITED?

The highly engaged,
abstract thinkers

Self-motivated students
with a desire to excel

Intellectually curious and
critical thinkers

Students willing to commit
to college-level work

INTERNATIONAL BACCALAUREATE



The International Baccalaureate program is a rigorous program of study focusing on critical thinking and international mindedness. The program seeks to develop the whole child - intellectually, personally, socially, and emotionally - through teaching of cultural understanding, language development, and volunteerism.

Designed to reinforce a positive attitude, the program teaches students to ask challenging questions, reflect critically, develop research skills, and learn how to learn.

The continuum of education spans from Kindergarten to Grade 12. IB schools maintain high standards by actively training and supporting teachers in the IB curriculum. IB schools are also evaluated and authorized by the International Baccalaureate Organization in order to receive IB World School designation.

OUR IB SCHOOLS

- [Academy of Richmond County](#)
- [Hephzibah Comprehensive High School](#)
- [Langford Middle School](#)
- [Hephzibah Middle School](#)
- [Copeland Elementary School](#)
- [Hephzibah Elementary School](#)
- [Lake Forest Hills Elementary School](#)

Janice Roberson's Video



WHO IS BEST SUITED?

Intellectually curious and critical thinkers	Effective communicators	Caring, balanced and open-minded students	Those willing to take risks, while maintaining principles	Students who are reflective and learn from experience
--	-------------------------	---	---	---

INTERNATIONAL BACCALAUREATE

PRIMARY YEARS PROGRAMME (PYP)

For Grade K-5 students, the PYP nurtures and develops learners who are caring and active participants in a lifelong journey of learning. It offers an inquiry-based, student-centered, and transdisciplinary curriculum framework with units of inquiry that encompass all subject areas. The PYP is an example of best educational practices globally, responding to the challenges and opportunities facing students in our rapidly changing world. By learning through inquiry and reflecting on their own learning, PYP students develop the knowledge, conceptual understandings, skills, and attributes of the IB Learner Profile to make a difference in their own lives, their communities, and beyond.

DIPLOMA PROGRAMME (DP)

For grades 11-12, DP is a two-year curriculum and among the most academically rigorous programs offered at the [Academy of Richmond County](#). The program emphasizes intellectual and international understanding, as well as responsible citizenship and community service.

Students are encouraged to sit for international exams with the opportunity to earn the IB Diploma are also required to complete Creativity, Activity, and Service (CAS) hours, the Theory of Knowledge Course, and an Extended Essay.



[Savannah's Video](#)



MIDDLE YEARS PROGRAMME (MYP)

For grades 6-10, MYP emphasizes the learning profile and focuses on an intensive study of core subjects, while integrating concept based learning through global contexts and key concepts. Students study a variety of disciplines and how they relate. MYP students complete community activities and service hours; a personal project is the culminating assessment for the program.

CAREER-RELATED PROGRAMME (CRP)

The IB Career-Related Programme is rigorous 11th and 12th grade curriculum available at the [Academy of Richmond County](#) preparing students to enter college or the workforce. In addition to completing their chosen career pathway, such as engineering or cybersecurity, students take a selection of rigorous IB courses and engage in service learning, language acquisition, and reflection and investigation into ethical issues in their fields of study. Students who successfully complete the programme requirements earn the IB Career-Related Certificate and may also earn college credit.

WHO IS BEST SUITED?

Students who are self-directed learners: motivated, persevering and independent.

Students with reading, writing, and mathematical skills at, above or near grade level.

Those who possess effective time management skills, basic computer skills, and can self advocate.

VISUAL AND PERFORMING ARTS



Visual and Performing Arts Programs develop a student's talents and passion for the arts.

Students receive specialized instruction in dance, music, theatre, and visual arts. As part of a strong academic program, the arts are approached through education, integration, and exposure.

At the elementary level, students receive weekly classes in each of the four arts disciplines, as well as arts-integrated instruction in grade-based classrooms.

Students continuing to middle and high school programs will receive more rigorous, intensive instruction in the visual and performing arts specific to their area of interest.

[Natalie Pirkle's Video](#)



SPECIAL FEATURES

- Students receive instruction in dance, music, theatre arts, and visual arts
- Performance opportunities available at all levels
- Collaboration with businesses and community organizations to provide resources and give insight to the skills students need to become successful adults

VISUAL AND PERFORMING ARTS SCHOOLS

- [Davidson Fine Arts Magnet School](#)
- [Garrett Elementary School](#)
- [Hephzibah Elementary School](#)
- [Warren Road Elementary School](#)

WHO IS BEST SUITED?

Students committed to developing personal artistic abilities

Those who desire to participate in artistic exhibitions and performances

Students who work well independently and in groups

Those willing to receive constructive feedback for continued growth in the arts

CYBER ACADEMY OF EXCELLENCE

The **Cyber Academy of Excellence** is open to students attending our traditional and magnet high schools who wish to pursue Cybersecurity Training as well as seek Industry Certification.

The students are provided transportation to the Cyber Academy of Excellence at the **Richmond County Technical Career Magnet School**.

Cyber Academy of Excellence students have the opportunity to prepare for the CompTIA Security+ Certification while earning college credits and following the guidelines of the dual enrollment students.

The program delivers a technically-focused, security-related curriculum explicitly designed to address the fast-growing careers in cybersecurity and computer science. The interdisciplinary nature of the program allows potential students to develop deep technological skills and an understanding of the business, managerial, and administrative elements of networking and coding principles.



HOW TO APPLY:

See school guidance counselor or administrator for referral

WHO IS BEST SUITED?

Motivated and hardworking high school students

Students who need a flexible school/work schedule



WHO IS BEST SUITED?

Motivated and hardworking high school students

Students who need a flexible school/work schedule

HOW TO APPLY:

See school guidance counselor or administrator for referral

MARION E. BARNES CAREER CENTER

The skilled trades center is a unique opportunity that provides hands-on experience for students of the Richmond County School System. Students are introduced to career fields related to manufacturing and skilled labor professions.

Students are afforded the opportunity to experience work-based learning, internships, and participate in volunteer efforts with Habitat for Humanity.

Success in any of these programs can lead to specified certifications, apprenticeship opportunities, post-secondary education, and possible employment immediately after graduation. Students wishing to participate are transported to the skilled trades center for specified courses.

- Barbering
- Carpentry
- Cosmetology
- Fine Furniture
- HVACR Electrical

- Low Voltage Electrical
 - Masonry
 - Nail Technology
 - Plumbing
 - Welding

CAREER AND TECHNOLOGY EDUCATION



[Keisha Quick's Video](#)



The Career and Technical Education Programs at [Richmond County Technical Career Magnet School \(RCTCM\)](#) provide students opportunities to experience leadership, academic, and social interactions along with hands on career readiness and experience opportunities.

Students experience academic rigor and advanced opportunities making it possible to earn a high school diploma and additional professional certification, specialty diplomas, and earn credit towards an associate degree.

Cybersecurity

This program includes implementing/troubleshooting access control, data integrity monitoring, security event monitoring, anti-malware protection, and security deployments.

Culinary Arts

A career in culinary arts provides job opportunities to be executive chefs to part-time food service workers.

Energy

Working in energy can include possibilities for work in utilities, gas and oil companies, government and research groups, energy education, or environmental regulation agencies.

Computer Networking

Networking is a broad pathway including occupations such as computer programmers, system analysts, and database administrators.

Electronics

This program includes biomedical engineering, informatics and engineering, software engineering, mechatronics and robotics, and electronics microengineering.

Audio/Video Technology and Film

This industry is comprised of two major employers: radio/television broadcasting companies and film production.

WHO IS BEST SUITED?

Students with a passion and intense drive to succeed with perseverance and determination.

Those with a strong sense of self.

Students who are adaptable to changing circumstances.

Those with enterprising skills and desire to be their own boss.



TRADITIONAL

“The strengths of the past form the foundation of our future” is the guiding philosophy of the Traditional program. Students are taught in a structured environment and are held accountable to a high standard of conduct and academics. This program values the best of the past: civics and citizenship; manners and etiquette; a strong foundation in the basics using proven instructional practices; classroom rituals and procedures; and allegiance to the traditions, interests, and ideals of diverse American culture.

The Traditional program is committed to developing young citizens possessing leadership skills that are nurtured within and are demonstrated openly in service and responsibility to self, family, community, and country.



C.T. Walker Traditional Magnet School serves students in grades K-5. The school has a long and proud tradition of academic excellence spanning over thirty years. C.T. Walker has been named a Georgia School of Excellence, a National Magnet School of Distinction, and a National Blue Ribbon School for Exemplary Performance.

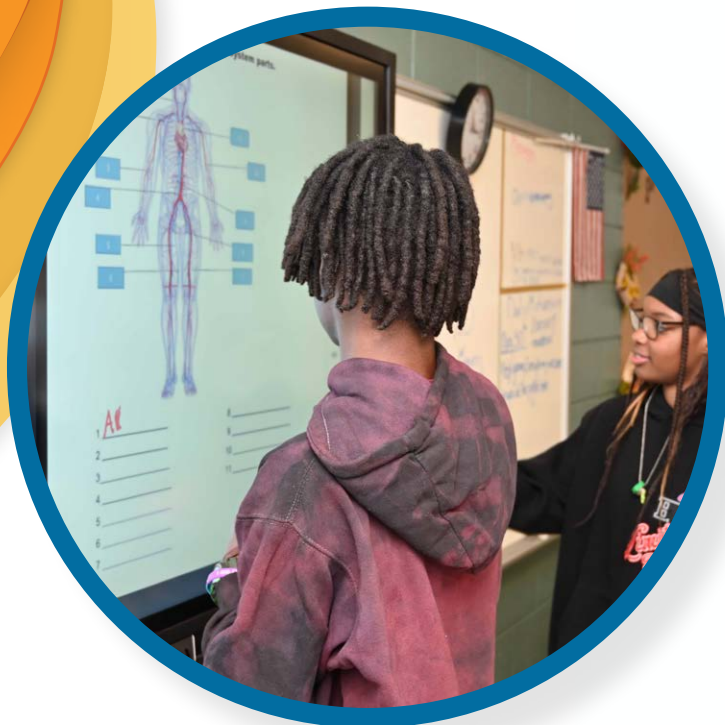
WHO IS BEST SUITED?

Students who learn best in structured, routine environments

Those who value good citizenship in a democratic society

Those who respond successfully to high expectations for personal conduct and academics

SCIENCE, TECHNOLOGY, ENGINEERING, ARTS, AND MATHEMATICS



STEM

STEM education is an approach to teaching and learning that integrates the content and skills of science, technology, engineering, and mathematics.

Along with content knowledge, a strong STEM program establishes student behaviors, which include engagement in inquiry, logical reasoning, collaboration, and investigation. The goal of STEM education is to prepare students for post-secondary study and the 21st century workforce.



STE(A)M

STE(A)M fuses arts and creativity with STEM to engage the whole child and foster high achievement in all areas by blending the arts, and sciences. Both STEM and STEAM employ the artistic process and scientific method of relying on exploration of ideas and possibilities. Both require high student engagement in exploring creative and critical thinking. STEAM compliments 21st century skills, particularly the “4 C’s:” creativity, collaboration, critical thinking, and communication.

STEM & STEAM SCHOOLS

- [Goshen Elementary School](#)
- [A. Dorothy Hains Elementary School](#)
- [Spirit Creek Middle School](#)
- [A.R. Johnson Health Science & Engineering Magnet School](#)

WHO IS BEST SUITED?

Independent, motivated students	Students with strong computer skills	Students who wish to complete their coursework online rather than through a traditional approach
---------------------------------	--------------------------------------	--

REACHING POTENTIAL THROUGH MANUFACTURING

Reaching Potential through

Manufacturing (RPM) is a partnership between Textron Specialized Vehicles Inc. and the Richmond County School System. Through this innovative program, students have the ability to make up lost ground toward a high school diploma while also earning an income and gaining valuable work experience in a manufacturing facility.

There are more than 100 students enrolled in this co-operative education program which combines an instructional day with a four-hour shift at a manufacturing facility. The facility produces components and sub-assemblies for products manufactured



by Textron Specialized Vehicles, which manufactures vehicles under the E-Z Go®, Cushman®, Textron Off Road®, TUG™, and Douglas™ brands. In addition to the manufacturing floor, the facility includes classroom and educational space to allow students to make progress toward their high school diplomas. RPM students also receive training in life skills and are provided tutoring resources as needed.

HOW TO APPLY:

See school guidance counselor or administrator for referral

WHO IS BEST SUITED?

Motivated and hardworking high school students

Students who need a flexible school/work schedule

PERFORMANCE LEARNING CENTER



The Performance Learning Center (PLC) is a non-traditional, virtual high school program in Richmond County that offers an In-Person and At-Home Option for students. The school promotes high academic standards through the implementation of the curriculum set forth by the Georgia Department of Education and the expectations of the Richmond County School System. PLC provides a place where all students are challenged and expected to be responsible for their education; in this setting, teachers serve as learning facilitators.

The Performance Learning Center offers a strong curriculum with more than 100 possible course selections in math, science, language arts, social studies, visual art, physical education, and the Entrepreneurship Pathway in CTAE. While attending PLC, students will master the knowledge and skills that will prepare them for success in technical school, college, the military, or the workforce.



HOW TO APPLY:

See school guidance counselor or administrator for referral

WHO IS BEST SUITED?

Independent, motivated students

Students with strong computer skills

Students who wish to complete their coursework online rather than through a traditional approach

HOUSE BILL 251

Under a 2009 state law (OCGA 20-2-2131), parents may request a transfer to another public school within their local school district to specified schools and grades designated as having available space.

Each year, the school system identifies schools with available space and accepts applications from families requesting a transfer under this law.

Applications are accepted November 1 – May 1 each year. Remaining seats will be available for applications July 1 - August 16. The list of schools with space available and the application can be found at rcboe.org/choice. In the Richmond County School System, any school with an enrollment below 90% capacity is considered a participating school.

If a parent chooses to transfer a child to another school, Georgia law requires the parent assume all costs and responsibilities related to the transportation of the child to and from school, as long as the child remains at the school. If a parent

does not enroll their child/children in the school they are approved to attend by the first week of school, the House Bill 251 becomes obsolete.

In addition, any change of school placement which is not the result of a bona fide change of residency may impact a student's eligibility to participate in Georgia High School Association sanctioned varsity activities and events for one calendar year. The parent or legal guardian is responsible for investigating and determining such impact on eligibility. Therefore, parents and guardians must make individual decisions about the consequences of accepting permissive transfers.



HOUSE BILL 224 FOR MILITARY FAMILIES

Effective July 1, 2017, Georgia House Bill 224 allows military families to attend any public school located within the school system where the military base or off-base military housing in which the student resides is located, provided space is available for additional enrollment.

Each year, the school system identifies schools with available space and

accepts applications for military families to attend these schools. The list of schools with available space and the application can be found on the school system website rcboe.org/choice.

Upon arrival, military families should enroll in their zoned school and complete the application to request a HB224 transfer.



1. Enroll the student in their Richmond County zoned public school.
2. Visit our website rcboe.org/choice and complete the online application to request a HB 224 transfer. The application to request a transfer must be completed within 30 days of enrollment. Paper copies of the application can be picked up at the central office, 864 Broad Street, Augusta, GA 30901.
3. In the event the number of transfer requests exceeds the available capacity in a particular school, requests will be approved based on the order in which they are received.
4. Parents will be notified of approval or denial by the email address provided on the application.
5. Once a request is approved, the parent assumes all costs and responsibilities related to transportation of their child to and from school so long as the child remains at the assigned school.

2024-2025

Richmond County Board of Education
864 Broad Street
Augusta, GA 30901
(706) 826-1000

Non-Profit Org
US POSTAGE
PAID
AUGUSTA, GA
PERMIT 306

School Choice Guide



APPLICATION DATES

MAGNET SCHOOLS AND SPECIALIZED PROGRAMS FALL/WINTER APPLICATION PERIOD

November 1, 2023: Applications open for magnet schools and specialized programs at 8 a.m.

November And December 2023: Schools host open house events for interested families.

January 5, 2024: Deadline to apply during Fall and Winter Application Period

January 24 & 27, 2024: Academic testing sessions held

February 16, 2024: Davidson Fine Arts auditions held

First Week Of March: Decision letters emailed

SPRING APPLICATION TIMELINE FOR MAGNET AND SPECIALIZED PROGRAMS

April 1 - May 1, 2024: Spring Application Period

May 17, 2024: Spring Academic testing sessions held

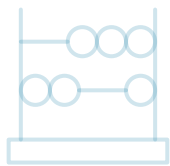
May 23-24, 2024: Davidson Fine Arts auditions

June 3, 2024: Decision letters e-mailed

July 1 - August 16, 2024 for Extended Period for HB 251 applications

HOUSE BILL 251 APPLICATION PERIOD

November 1, 2023 - May 1, 2024: Decision letters e-mailed on or before May 15, 2024



NOTE: The spring application process will be available to students who did not apply for winter during the early application phase. Only programs with available space will be listed as options during the spring application window. Military families with PCS Orders that arrive in Augusta between January 1, 2024 through September 1, 2024 should contact the Central Office at (706) 826-1136.