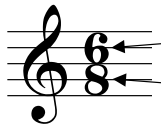


# Time Signatures - $\frac{6}{8}$



In  $\frac{6}{8}$  time there are six beats in each measure.  
The eighth note gets one beat.

Rhythmic values

- A sixteenth note ( $\text{♪}$ ) = 1/2 beat
- An eighth note ( $\text{♩}$ ) = 1 beat
- A quarter note ( $\text{♪}$ ) = 2 beats
- A dotted quarter note ( $\text{♩.}$ ) = 3 beats
- A dotted half note ( $\text{♩.}$ ) = 6 beats

1. Clap the rhythm while counting out loud.

1 2 3 4 5 6    1 2 3 4 5 + 6    1 2 3 4 5 6 +    1 + 2 + 3 + 4 5 6

2. Write the count below the notes and then clap the rhythm while counting out loud.

-----

3. Write a  $\frac{6}{8}$  time signature after the clef sign.

Write the count below the notes and then clap the rhythm while counting out loud.

-----

4. Write a  $\frac{6}{8}$  time signature after the clef sign. Write in the count below the notes. Draw the missing bar lines.

-----

5. Write in the count below the notes and add the missing barlines.

-----