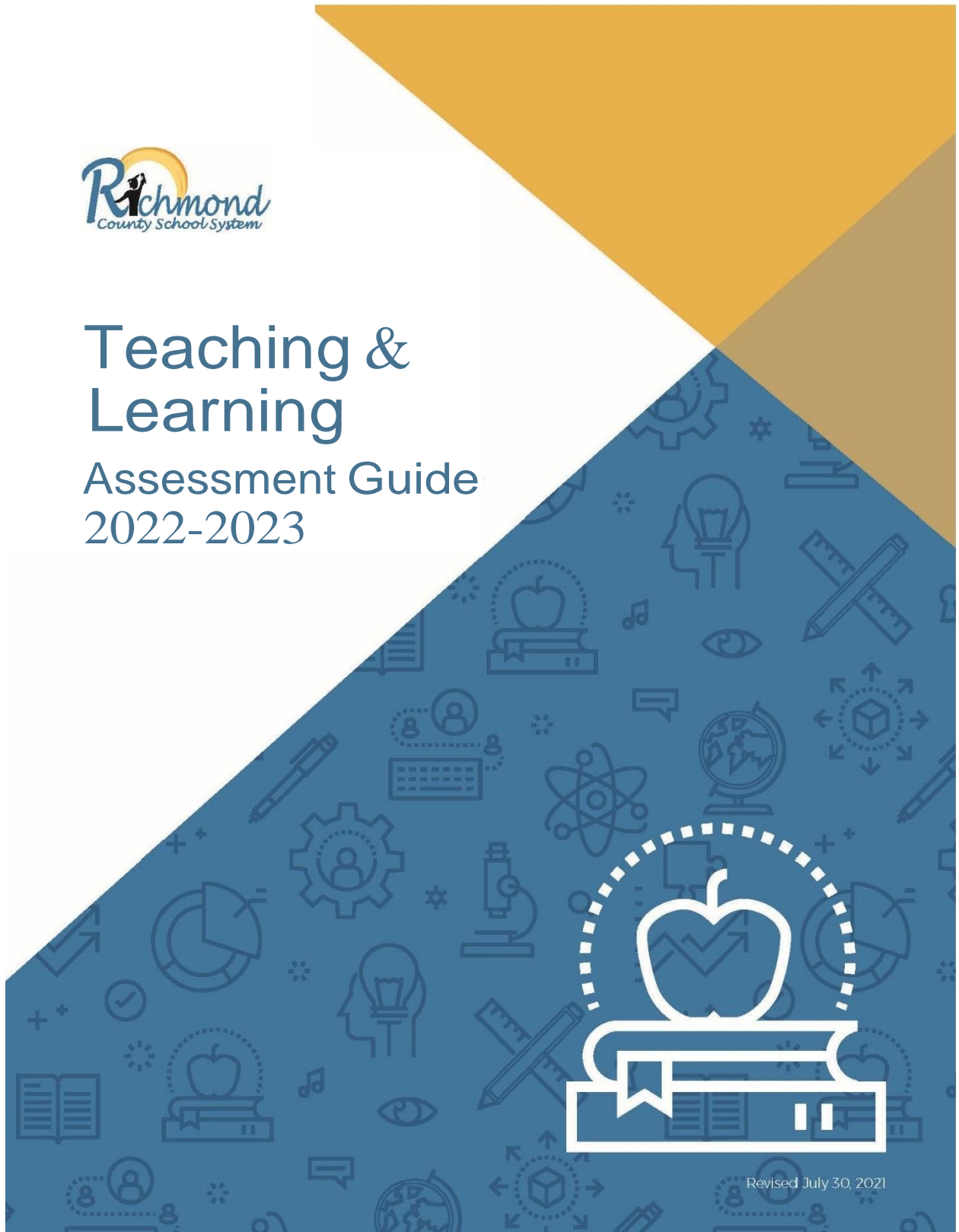




# Teaching & Learning

## Assessment Guide

### 2022-2023



Revised July 30, 2021

## Table of Contents

Teaching and Learning Assessment Calendar.....	3
Universal Screeners .....	4
Unit Pre and Post Assessments.....	5
RCSS Content Mastery Assessment.....	6
Content Mastery Assessment Testing Schedule .....	7
Content Mastery Assessment Testing Conditions.....	8
Resources .....	9

## Teaching and Learning Assessment Calendar

### iReady Universal Screener Window Dates for Grades K-8

BOY	Grades 1-8: August 23 – September 16, 2022 *Kindergarten: September 19-30, 2022
MOY	January 5-27, 2023
EOY	April 24-May 5, 2023

### NWEA Map Universal Screener Window Dates for Grades 9-12

Fall	August 23 – September 16, 2022
Winter	January 5-27, 2023
Spring	Grades 9-11; April 24-May 5, 2023

### CMA Instructional and Testing Window Dates for Grades 3-8 and HS Tested Courses

CMA	Testing Window
#1	Sept 26-Oct 6, 2022
#2	Dec 5-16, 2022
#3	Feb 27-Mar 10, 2023

## Universal Screeners

### **iReady**

The iReady diagnostic is administered in grades K-8. It is designed to establish a metric that will allow for an accurate assessment of student knowledge that can be monitored over a period of time to gauge student improvement. It accurately assesses student knowledge for different content domains within the English Language Arts and Mathematics content areas. The diagnostic provides detailed information on what skills students are likely to have mastered and identifies the next progression of skills. Teachers should use diagnostic data to drive their instructional planning beginning with the [Prerequisite Report](#). This report addresses unfinished learning. In preparation for the first diagnostic, please have them review the video on how to [get good data](#).

### **NWEA Map**

The NWEA Map diagnostic is administered in grades 9-12. It is a computer adaptive test designed to measure student growth and achievement levels in English Language Arts and Mathematics. The diagnostic measures what students know and what they are ready to learn next. Teachers utilize the data to drive instructional planning and enhance the personalized learning experiences for all students. Use the [NWEA Map](#) tools to learn how to make instructional decisions.

## Unit Pre and Post Assessments

Pre and post testing refers to academic achievement tests (in reading, mathematics, science, social studies) that are given to students to assess their academic progress from the beginning to the end of a program of instruction. They are used to inform ongoing unit instruction. For our purposes, the **required** pre and post assessments should be administered at the beginning and the end of each unit based on the curriculum maps. These assessments are housed in the Canvas LMS platform and iReady Standards Mastery platform (**Grades 2-5 Mathematics only**). If you have any questions about the pre and post assessments, please contact Kinesha Ponder.

Content Area	Grade Level	Platform
Mathematics	K-1, 6-12	Canvas
Mathematics	2-5	iReady Standards Mastery
ELA, Science, Social Studies,	K-12	Canvas

### Best Practices on Administering Pre and Post Assessments

#### Pre-Assessment

- The building level testing coordinator will assign the Math pre-assessments that are administered through the [Standards Mastery](#) platform.
- Prior to beginning of the unit, administer unit pre-assessments on the buffer days identified on the [RCK12 Curriculum Maps](#).
- Pre-Assessments **should not be graded**; however, they can provide insight on students' prior knowledge as well as promote student engagement.
- Use pre-assessment data to strategically plan the students' learning paths, determine interventions and acceleration, and implement purposeful grouping.
- Engage students in goal setting for the unit.
- During the unit, confer with students to provide feedback on progress towards mastery of the standard.

#### Post-Assessment

- The building level testing coordinator will assign the post assessments that are administered through the Math [Standards Mastery](#) platform.
- After completion of the unit, administer unit post-assessments at the completion of the unit, as identified on the curriculum- map, to measure mastery of the standard(s) assessed.
- Assessment **can be graded**.
- Utilize the [RCSS Data Analysis Protocol](#) to determine and plan remediation or acceleration lessons.
- Celebrate student success and growth.

#### Evidence-based Resources

Ainsworth, Larry. 2014. *Common Formative Assessments 2.0*. Thousand Oaks, CA: Corwin, A Sage Company.

## RCSS Content Mastery Assessment

The RCSS Content Mastery Assessments (CMA) are standards-based interim assessments developed for teachers. They provide a bridge between classroom assessments and end-of-year summative assessments.

Educators use the data from standards-based Content Mastery Assessments to

- Evaluate student learning of specific Georgia Standards of Excellence.
- Analyze patterns of student need to inform changes to the curriculum and instruction.
- Synthesize student misconceptions to inform instructional strategies and interventions.

Content Mastery Assessments are designed around a set of priority standards. They enable educators to collect deep and meaningful information about student learning of the standards. Standards assessed on the Content Mastery Assessments address critical skills and applications of grade level standards. To ensure the Content Mastery Assessments are curriculum and instruction sensitive, the RCSS Content Mastery Assessment Taskforce created [Content Mastery Assessment Blueprints](#) that closely align to the sequencing of standards as outlined in the [RCK12 Curriculum Maps](#). Faculty and staff may reference the [Mastery Connect Guides](#) to troubleshoot before and/or during administration.

The Content Mastery Assessments are only viewable during the testing window for test security purposes. Faculty and staff may download the viewable assessment following the administration to support student item analysis, identifying misconceptions, and creating an instructional plan to support learning gaps in learning prior to the end of the school year.

The Canvas Mastery Connect platform is used to administer the Content Mastery Assessments for Grades 3-8, and the high school tested courses for ELA, Mathematics, Science, and Social Studies.

### **Additional Optional Resource**

This year, as an additional resource, teachers are able to use the [DRC Beacon Formative](#) to inform Teaching and Learning in 3<sup>rd</sup> through 8<sup>th</sup> grade math and ELA. This state provided, computer adaptive resource is delivered on the same platform as the Georgia Milestones. It allows teachers to get immediate and detailed results to guide their instruction. They can also be customized to assess specific content or all content in a course. The items are aligned to GA Standards and are not high stakes. If you would like additional information on how to use the testlets and comprehensive formative interim assessments, please reach out to Kinesha Ponder.

## Content Mastery Assessment Testing Schedule

Content Mastery Assessment Courses	
<b>ELA</b>	Grades 3-8, 9 <sup>th</sup> Grade Literature, American Literature & Composition
<b>Mathematics</b>	Grades 3-8, Algebra 1
<b>Science</b>	Grades 3-8, Biology, Physical Science
<b>Social Studies</b>	Grades 3-8, US History, *8 <sup>th</sup> Grade – GA Studies/American Government Combo Course

RCK12 Content Mastery Assessment	Testing Window	Make-Up Days
CMA 1	Sept 26-Oct 6th	October 6-7, 2022
CMA 2	Dec 5-16th	December 16 and 19, 2022
CMA 3	Feb 27-Mar 10th	March 13-14, 2023

**\*Content Mastery Assessment- All content area short constructed response items must be scored within one week of the closing of the testing window. High schools will follow their testing calendar and administer within the testing window.**

## Content Mastery Assessment Testing Conditions

- The Content Mastery Assessment should be administered by the classroom teacher or certified designee. *Substitutes teachers should not administer Content Mastery Assessments.*
- Communicate the Content Mastery Assessment testing window and purpose to students and parents. Schools may use the [Parent Communication Template](#) to provide parents with information concerning assessments.
- Each Content Mastery Assessment should be administered during one class period for the following four assessments: reading, mathematics, science, and social studies.
- Schools should develop a schedule for make-up days within the testing window.
- The Content Mastery Assessment testing environment should mirror the Georgia Milestone testing environment.
  - ❖ Post "Testing in Progress" signs outside of classroom doors during administration.
  - ❖ Limit interruptions (i.e. intercom announcements, loud hallway noise).
  - ❖ Provide a well-lit classroom.
  - ❖ Arrange desks or tables to ensure that each student has adequate workspace for all required test materials.
  - ❖ Circulate the classroom to ensure that all student responses are recorded correctly.
  - ❖ If a student has an IEP, 504, or \*Testing Participation Committee (TPC) form that includes classroom testing accommodations, please adhere to them.

\*Testing accommodations for English Learners are found on their annual TPC forms



## Resources

[DRC Beacon Formative](#) – an online, computer-adaptive assessment that is aligned to the Georgia Standards of Excellence in Mathematics and English Language Arts for grades 3-8. This tool can also be used to generate a Mock Georgia Milestone Assessment.

[Analyzing Student Learning Data](#) – teacher action steps used to ensure that the gathered student learning metrics are used to inform instructional decisions

[RCSS Data Analysis Protocol](#) - process that is used to support data analysis

[i-Ready Standards Mastery](#)– platform used to administer unit pre and post assessments for Mathematics only in grades 2-5. Can only be assigned by an instructional specialist.