

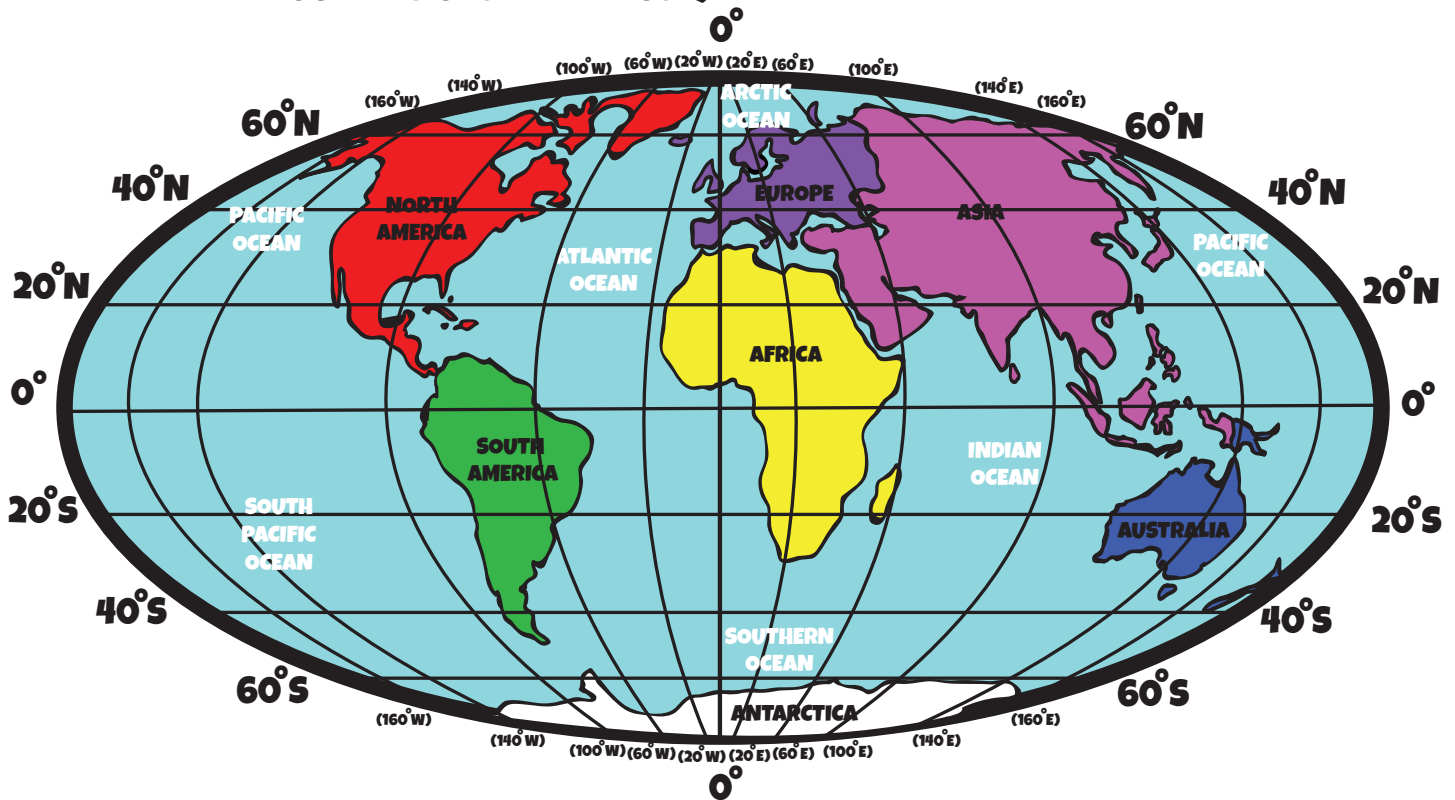
WHAT IS LATITUDE AND LONGITUDE, AND HOW DO YOU USE IT?

SOME OF THIS JOURNEY WILL TAKE PLACE OVER WATER. TO NAVIGATE THE OCEAN, YOU WILL HAVE TO UNDERSTAND LATITUDE AND LONGITUDE COORDINATES.

WHAT IS LATITUDE AND LONGITUDE?

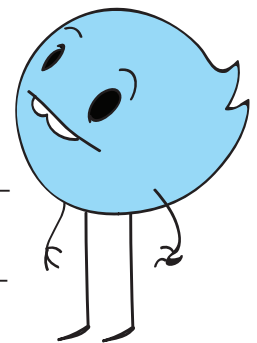
LATITUDE - LINES THAT GO AROUND THE GLOBE (THEY GO BY THE DIRECTIONS NORTH AND SOUTH)

LONGITUDE - LINES THAT POINT FROM TOP TO BOTTOM OF THE GLOBE (THEY GO BY THE DIRECTIONS EAST AND WEST)



EXAMPLE: WHAT CONTINENT IS AT 20° SOUTH AND 40° WEST? SOUTH AMERICA

1. What continent is 40° north and 20° east? _____
2. What ocean is found at 20° south and 100° east? _____
3. What continent is at 20° south and 140° east? _____
4. What ocean is at 40° south and 160° west? _____
5. What continent is at 40° north and 100° east? _____



Answers: 1. Europe 2. Indian Ocean 3. Australia 4. South Pacific Ocean 5. Asia