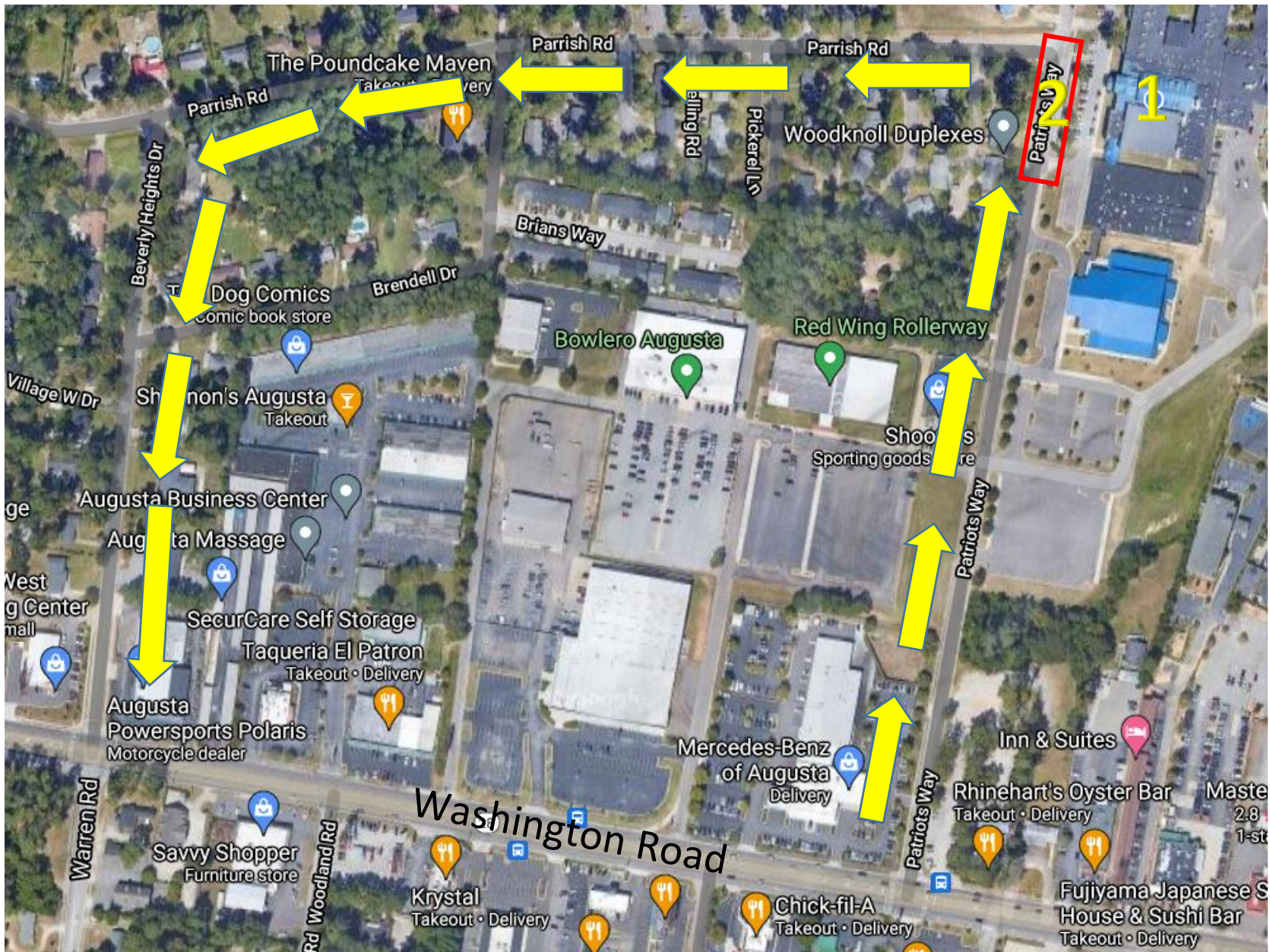


Westside High School Morning Traffic Directions for Car Riders



Purpose: Car rider drop off at Westside is an eventful time in the morning. We need your help with the car rider lines in dropping your students off and picking them up. Please see the map on the back to help with logistics. Also, as a reminder, students can ride the bus to school.

1. We ask that all students get dropped off at the top of the road and walk down the steps through the front entrance. There are two lanes that parents can drive through to drop students off.
2. Students should be ready to get out of their vehicle as soon as they are at the top of the road. Parents it is important to move through as quickly and safely as possible.
3. Please DO NOT do a U-Turn but continue to follow the road around to Parrish Way. Patriots Way turns into Parrish Road. You will then turn on Beverly Heights Dr. This will take you back to Washington Road. Again, see the map on page 2.
4. If you are in need of parking, please let the administrator at the road know to let you in the front.
5. If your son or daughter rides the hub bus, they need to be dropped off by 7:00 am to avoid the traffic line. Any student after this time, we may ask the parent to drop off through the drop off line and the student can walk down the steps to the buses from there.



Map Key

#1- Westside High School

#2- Car Rider Drop Off Out at the Road—Please DO NOT U-TURN but follow Parish Rd